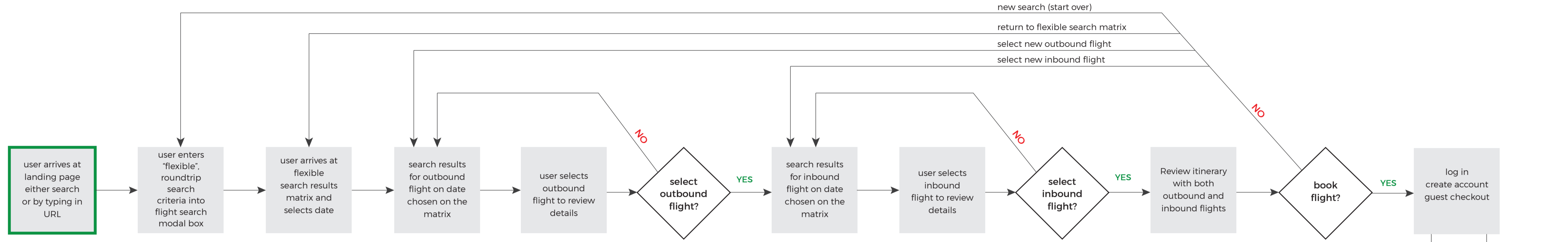
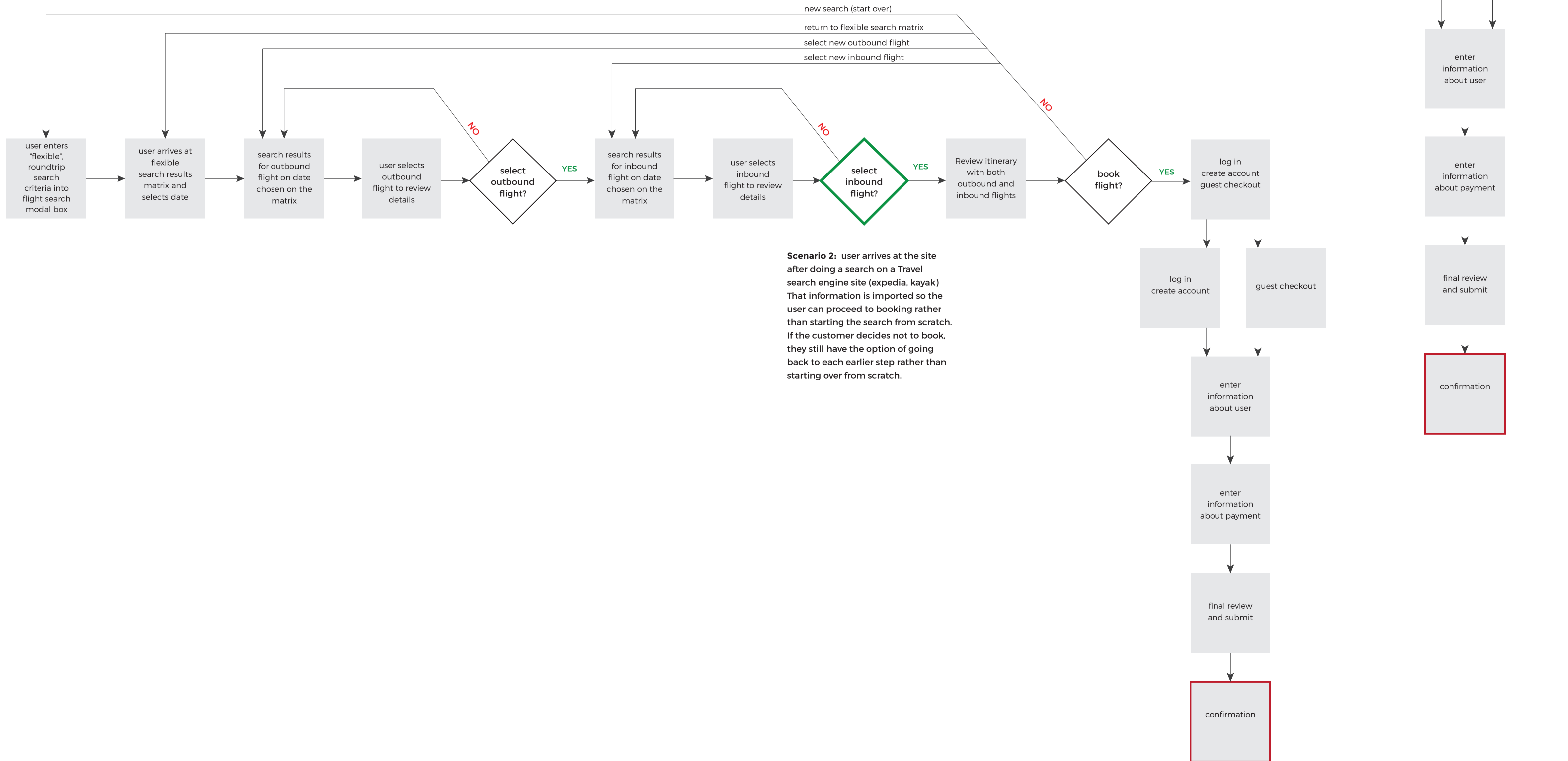


**PAN AM** user flows



**Scenario 1:** user arrives at the landing page by either doing a search or by typing in the URL. They do NOT arrive via a Travel search engine site (such as Expedia, Kayak, etc.)



**Scenario 2:** user arrives at the site after doing a search on a Travel search engine site (expedia, kayak). That information is imported so the user can proceed to booking rather than starting the search from scratch. If the customer decides not to book, they still have the option of going back to each earlier step rather than starting over from scratch.

**START**

user enters flight criteria into "search flights" and chooses the "flexible dates" option in the modal box on landing page

**Scenario 1:** user arrives at the landing page by either doing a search or by typing in the URL. They do NOT arrive via a Travel search engine site (such as Expedia, Kayak, etc.)

**Scenario 2:** user arrives at landing page either by search or by typing in URL

